



Hartford Foundation
FOR PUBLIC GIVING

Newsletter



DataHaven Executive Director Mark Abraham presents on the Community Wellbeing Index 2023 at a recent event at the Connecticut State Capitol.

Community Wellbeing Index 2023 Highlights Connecticut's Opportunities and Challenges

The use of data is critical for a grantmaker like the Hartford Foundation. Quality data – statistics as well as qualitative information such as resident input – are key to identifying inequities in our region. As we seek to address those inequities, data inform our grantmaking and provide the basis for [our strategic work](#).

DataHaven, a New Haven-based nonprofit, released its **Community Wellbeing Index 2023** earlier this month. The Hartford Foundation is a proud funder of this report. It uses federal, state and local data sources, along with thousands of resident interviews, to paint a portrait of the quality of life in towns across Connecticut. The report contains new information about public health, safety, civic vitality, and other data that isn't captured in the Census or elsewhere.

The Community Wellbeing Index helps illuminate why the Foundation and our nonprofit partners work the way we do. We hope it will spark dialogue about the challenges and opportunities facing our state.

To learn about the Community Wellbeing Index 2023, including takeaways specifically for Greater Hartford, [click here](#).

Visit [DataHaven's website](#) for reports on New Haven or Fairfield County, or individual town data.

Read more:

- [Data measuring the health of Greater Hartford communities finds increasing economic, racial disparities](#) (*Hartford Courant*)
- [Greater Hartford's race and economic disparities 'more pronounced,' report shows](#) (*CT Insider*)

 **MORE PERFECT**



Partnership with 'More Perfect' Aims to Seed National Project to Expand Youth Service Opportunities

More Perfect is an alliance of more than 100 organizations, including 14 Presidential Centers, that are uniting around the advancement of five Democracy Goals including national service and volunteering.

The Hartford Foundation for Public Giving, the Jewish Community Foundation of Greater Hartford, and a group of local philanthropists are partnering with More Perfect to enhance service opportunities for young adults across the United States. More Perfect has **identified Greater Hartford as an ideal region to host a pilot youth community service initiative.**

As a national strategy, this initiative would double the number of civilian service opportunities for young adults from 125,000 to 250,000 by 2026.

Our Foundation is proud to be a partner in this effort. Increasing civic engagement and providing employment opportunities – particularly among youth of color – are two of our key priorities. We're excited for the possibility that we might pilot this initiative right here in our own city.

[Learn more.](#)

Grant Opportunities

We are currently seeking proposals for the following grant opportunities:

- Community Organizing RFP
- Resident Engagement RFP

Visit our [Grant Opportunities web page](#) for details and to see upcoming RFPs.

Sign up to be notified when new grant opportunities are announced.

**WELCOMING AFFORDABLE HOUSING
IN THE SUBURBS**

MARCH 15 -7:00PM
GHIAA/OPEN COMMUNITIES ALLIANCE
SHEPHERD OF THE HILLS LUTHERAN CHURCH
7 WESCOTT RD SIMSBURY

MARCH 16 -7:00PM
GHIAA/OPEN COMMUNITIES ALLIANCE
ASYLUM HILL CONGREGATIONAL CHURCH
814 ASYLUM AVE, HARTFORD

MARCH 29 -7:00PM
GHIAA/OPEN COMMUNITIES ALLIANCE
ROCKY HILL CONGREGATIONAL CHURCH
805 OLD MAIN ST. ROCKY HILL

APRIL 6 -7:00PM
DESEGREGATE CT
ROCKY HILL SENIOR/COMMUNITY CENTER
55 CHURCH ST, ROCKY HILL

Sponsored by Rocky Hill Congregational Church with a grant from Hartford Foundation for Public Giving

Logos: RHCC, GHIAA Greater Hartford Interfaith Action Alliance, Hartford Foundation for Public Giving, OPEN COMMUNITIES ALLIANCE Embracing Diversity to Strengthen Connecticut, DESEGREGATE CONNECTICUT

Welcoming Affordable Housing in the Suburbs: Educational Series

The Hartford Foundation is a proud funder of an educational series designed to share information around the importance of affordable housing in our state. Increasing the availability of quality, affordable housing in Greater Hartford is vital to our region's success and a key part of our [Higher Opportunity Neighborhoods](#) portfolio.

Presentations have already been held in Simsbury and Hartford. Anyone is welcome to join us at the Rocky Hill Senior/Community Center on April 6 at 7:00 p.m. for the final presentation in the series.

Read more:

- [In an expensive housing market, one group is turning to suburban churches for change](#) (*Hartford Courant*)
- [How advocates say affordable housing can fix inequity in Hartford suburbs](#) (*CT Insider*)

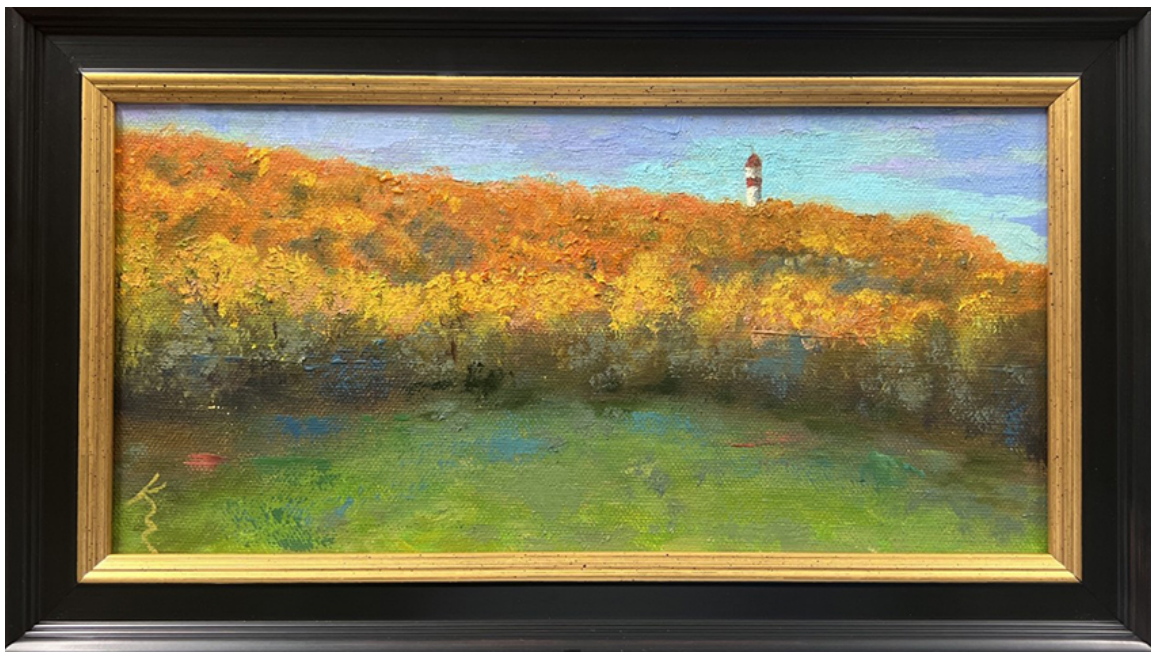


Catalyst Endowment Fund Celebrates 30 Years

Last week, the **Catalyst Endowment Fund** held its first educational session of 2023 and a special 30th Anniversary Celebration.

Since 1993, when a small group of volunteers created the giving circle, Catalyst has raised more than \$1.5 million and made nearly \$1.2 million in grants to a variety of programs that have helped improve our region.

This latest meeting was the first education session of Catalyst's 2023 topic of study, **Preventing Homelessness: Investing in Housing Access**. Attendees heard from Brandon McGee, Deputy Commissioner of the Department of Housing. Anyone with interest in this topic or a desire to join the giving circle is welcome to join us at our next meeting on May 18. Email Ramonita Garcia at rgarcia@hfpg.org for details.



"Fall at Heublein" by Kate Emery

Donor Spotlight: Kate Emery Family Fund

Kate Emery is known as a business leader, a small business advocate, artist, and philanthropist.

In 1986, Kate founded The Walker Group to offer management services of the new microcomputers that were just making their way into businesses. In 2007, she started the nonprofit organization reSET to help other organizations incorporate impact into their business models. Kate and reSET were instrumental in bringing B Corp legislation to Connecticut in 2014 to protect companies that prioritize impact in addition to profits. Five years later, she transformed The Walker Group into a social enterprise, dedicating one-third of its distributed profits to the community. Not one to retire, she “rewired” to focus her time on painting and on reSET.

Kate started the **Kate Emery Family Fund**, a donor-advised fund at the Hartford Foundation, to support new ideas and nonprofit organizations doing innovative work in our communities to help create a better world for all. Half of all proceeds from paintings sold on KateEmery.com will go to the fund.

[Learn about opening your own fund at the Hartford Foundation.](#)

Questions? Email hartfordfoundation@hfpg.org.



Hartford Foundation for Public Giving | 10 Columbus Boulevard, 8th Floor, Hartford, CT 06106

[Unsubscribe](#) hartfordfoundation@hfpg.org

[Update Profile](#) | [Constant Contact](#) [Data Notice](#)

Sent by hartfordfoundation@hfpg.org